



Item No. MR16-36SMD(3528) (3528 SMD Lights)

Specifications:

- 1) Dimension: 50*50mm
- 2) Input voltage: 12v/220-240
- 3) Power consumption: 2.3w
- 4) Led Qty: 36SMD-3528
- 5) Luminous flux: 140-160lumen
- 6) Colour temperature: warm white (2700-3500k) ; natural white(3500-5000k); cool white(5000-7000k)
- 7) Beam angle: 120°
- 8) Colour: Red, Yellow, Blue and Green are also available
- 9) Life time: 50,000 hrs+
- 10) Light base: MR16
- 11) Warranty: 3 years
- 12) Certification: CE and RoHS Approved

Features:

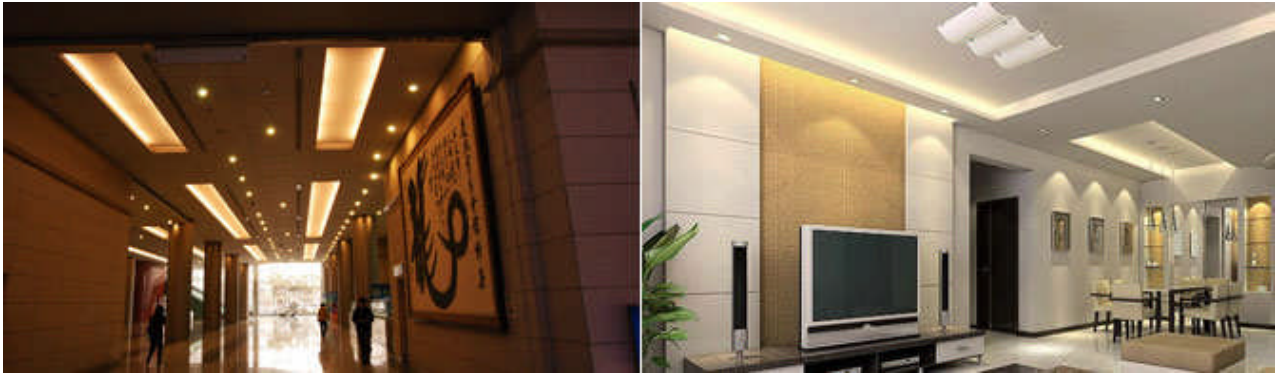
- 1).Environment friendly and energy saving, No mercury, UV or IR radiation
- 2).Long lifespan,high brightness
- 3).Good colour rendering and low power consumption
- 4).High quality SMD chip as light source
- 5).Different voltage,light base are available for choice

Applications:

Suitable for DIY stores, hardware store,lighting store,supermarket,electronic store,internet shop and some project areas like:

- 1) New house decoration spot light

- 2) Lighting fixtures light source
- 3) Furniture lights source
- 4) Ceiling lamp
- 5) Shop window ,showcase light
- 6) Jewelry shop ,shop courter spot light source



 **Ningbo Max Lighting Co.,Limited**

Address:No.1085,Chunhua Road,Wangchun Industrial Zone, Ningbo City, Zhejiang, China

Tel:0086-574-82051037

Fax:0086-574-87168146

E-mail:sales@ledlightmax.com(Sales Department)

tech@ledlightmax.com(Technical Support)

Website:www.ledlightmax.com